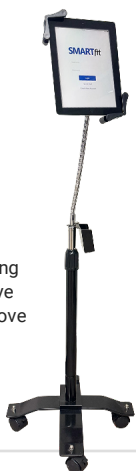
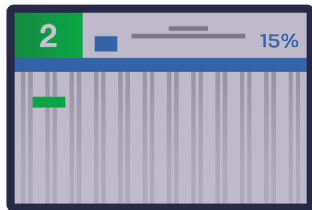


TV supplied by customer.  
Instructions included to connect with SMARTfit Controller



Apple iOS or Android  
Tablet supplied by  
customer.

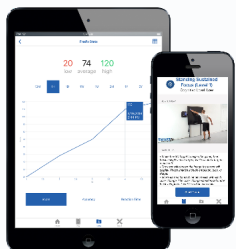
Minimum Tablet

Requirements:

- iOS/Apple: Operating System: 9.3 and above
- Android: 4.4 and above (5.0 and above recommended)
- Connectivity: Wi-Fi, Bluetooth 4.0

### SMARTfit iOS/Android App User Interface

Our iOS/Android app, available for download on both the App Store and Google Play, provide the tools to customize and tailor programming to any level and supplying the data to measure and track progress.



**Hardware:** One controller, one interactive 46" x 46" wide panel mounted on a free standing steel frame with push button electric pneumatic lift to wheels for portability, adjustable height system that ranges from floor to 7 feet, 9 computerized targets with sensors, multifunctional LED displays, and pre-loaded firmware, tablet stand, CE Certification.

**Accessories:** One pair of rubber-tipped drumsticks, one pair of foam noodles, and one two-pound bouncing medicine ball included.

**Software & License:** Most recent version of SMARTfit app included, to be uploaded to iOS or Android Tablet, which is not included. App can also be uploaded to unlimited user smartphones. Minimum one year SMARTfit Annual License required- G, P, PA, R, or RA. Purchase five years for a lifetime license.

#### Annual License Options:

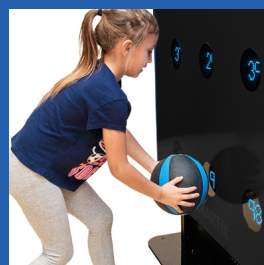
- SMARTfit Model G Annual License - Games Only (Mini, Trainer, ProTrainer)
- SMARTfit Model P Annual License - Performance, Wellness, and Fitness (Mini, Trainer, ProTrainer)
- SMARTfit Model PA Annual License - Performance, Wellness, and Fitness with Assessments (Mini)
- SMARTfit Model R Annual License - Rehab (Mini)
- SMARTfit Model RA Annual License - Rehab with Assessments (Mini)

**User Manual and Installation Instructions:** ([link](#))

**Site Survey:** Be sure to [complete this site survey](#), especially for on-wall installations, and share it with your SMARTfit representative to ensure nothing is missed.

**Software Options:** [See full controller software license explained](#)

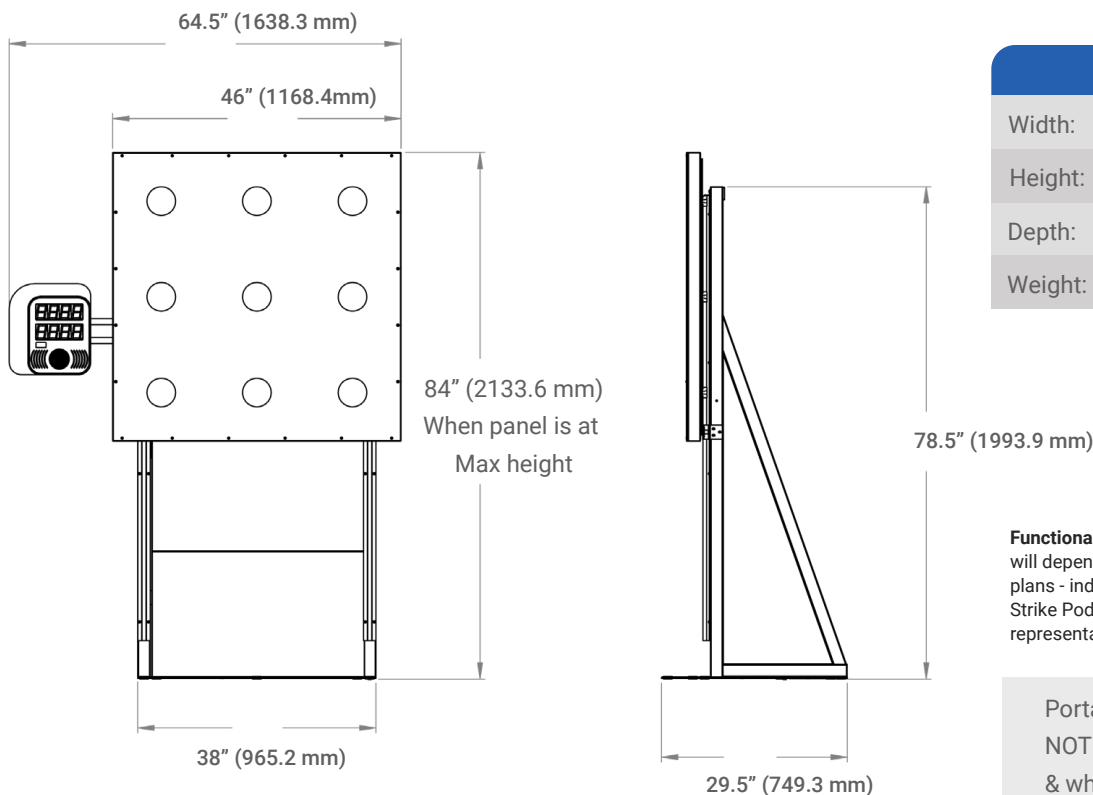
**Purchasing Guide:** ([link](#))



# SMARTfit® MINI HIGH IMPACT

High Impact Mini Portable Specs

SKU | BLACK: 1-41301



	Portable	CPU
Width:	64.5" (163.83 cm)	10" (25.4 cm)
Height:	84" (213.36 cm)	12.5" (31.75 cm)
Depth:	29.5" (74.93 cm)	2.6" (6.60 cm)
Weight:	400-lbs (181.44 kg)	5-lbs (2.27 kg)

System power requirements:  
100-240VAC/50-60HZ/3Amp, receptacle

**Functional Playing Space:** The playing space required will depend on your specific product and programming plans - individual, small group, large group, ball play, Strike Pod placement, etc. Ask your SMARTfit representative if you have questions.

Portable Lift Kit & Wheels  
NOTE: The PORTABLE has a pneumatic lift kit & wheels built into the frame. When wheels are engaged, the system stands at 79" tall.

## Add SMARTfit Strike Pods to create a 360-degree training environment

Stands are recommended

### SMARTfit Strike Pods - 1-80010

- Each Pod comes with a Mounting Plate, Rack Strap, & Power Bank
- Capable of adding up to 15 pods
- Available colors: yellow, red, blue, black, green



### Charging Cradle 1-80017



Required with purchase of a Strike Pod. Charges up to 6 power banks

### Spare Power Bank 1-80016



### Group Training Wristbands (5-pk)



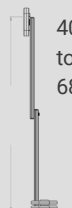
### Drumsticks (pair) 2-60202



### 68" (1727.2 mm) Adjustable Stand - 1-80110

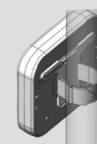
- Stand: 22-lbs (9.98 kg)
- (1) 22-lb (9.98 kg) rubber coated weights

40" (1016 mm) to 68" (1727.2 mm)



### 45" (1066.8 mm) Portable Stand - 1-80450

- Pole - 1.5-lb (0.68kg)
- 10-lb (4.53 kg) removable base



Follow Us:



1-800-900-8542

[www.smartfitinc.com/fitness](http://www.smartfitinc.com/fitness)

[www.smartfitinc.com/rehab](http://www.smartfitinc.com/rehab)